



Coover Grants continued from page 1

comprised of CFO Board Members Jill Reynolds, Margie Berry, Bill Lee, and Sharon Whitehill Gray, and Jeff Seifried, regional development manager at the Springfield Area Chamber of Commerce. The Committee allocated \$69,000 in grants to weekend backpack programs serving schools in Weaubleau, Wheatland, Hickory County, Halfway, Gainesville, Clinton, Washburn, and Taney County.

Jill Reynolds, vice president at Commerce Trust and secretary of the CFO Board of Directors, said the review panel put the highest priority on children's basic needs across the region. The weekend backpacks, in particular, fill a gap for kids who rely on the weekday free and reduced breakfast and lunch programs for the bulk of their nutrition.

"Kids can't succeed at learning or at life if they are

hungry, or need medical or dental care," she said. "All of these recipients honor the work Mrs. Coover wanted to support through her legacy gift."

Tim Steele, a special-education teacher for Southwest R-V in Washburn, said the district's backpack program started with a simple exercise of asking kids what they had for dinner the previous night and being dismayed at the answers.

"I just can't tell you the appreciation these kids have for what we provide for them," he said after receiving a \$13,000 check at the Coover grant ceremony on Feb. 15 at Commerce Bank.

A number of the recipients cited the increased needs for their programs through the economic downturn.

Jackie Barger, executive director of the Children's Smile Center, which received \$6,000 to support its service to kids in Christian and Stone counties, said the number of Medicaid-eligible kids has increased by 11 percent since 2009.

"If a kid's mouth hurts, they don't eat well; they don't learn well," he said. "This is one of the most desperate needs. It is our goal to be a permanent dental home for them. This grant helps us expand dramatically the kids that have exposure to dental education."

Commerce Trust Vice President Jill Reynolds presents a \$15,000 check to Weaubleau Superintendent Eric Wilken and Wheatland Superintendent Dave McQuarter for a backpack program serving Hickory County students – one of six such programs funded by the Coover grants.



2011 COOVER GRANTS:

Southwest R-V School District: \$13,000 for a backpack program.

Gift of Hope, Inc.: \$6,000 for its Backpack Club program serving Taney County students.

Weaubleau R-III School District: \$15,000 for a Back Snacks program run by teen volunteers.

Halfway R-III School District: \$16,000 to provide Back Snacks for students in need.

Ozark County Community Foundation, Gainesville R-V School District and the Ozark County Ministerial Alliance: \$14,000 for a weekend backpack program.

Carthage Crosslines Ministry: \$2,500 to apply toward cost of a freezer to increase food-storage capacity.

West Plains Christian Clinic: \$10,000 to renovate and equip a room in the clinic.

Children's Smile Center: \$6,000 to provide dental screenings for an additional 450 children in Christian and Stone counties.

Faith Community Health: \$7,500 to provide for nearly 400 additional patient appointments for Stone and Taney County clients.

Cardinal Cares Program: \$5,000 to provide food and clothing for children in the Clinton School District.

Newborns in Need, Inc., Southwest Missouri Chapter: \$3,000 for services for sick and needy babies and their families in Douglas, Laclede, Ozark, Webster and Wright counties.

Sigma House of Springfield: \$7,000 to help clients who suffer from treatable medical or dental conditions in Greene, Christian, Taney, Stone, Barry, Lawrence, Dade, Webster, Polk, Dallas and Douglas counties.

Grantmakers Challenge continued from page 1

– Enhancing Children's Healthy Opportunities
– developed comprehensive counseling and family wellness service at two Springfield Title I schools, Campbell and Robberson elementaries. The CFO's funding was channeled for services through Springfield Public Schools, Missouri State University, Burrell Mental Health, and the Community Partnership of the Ozarks.

"I think what we're doing in Springfield is groundbreaking and we hope to replicate it here and elsewhere," Robberson Principal

Kevin Huffman said.

Lynn Tynes, president of the Junior League of Springfield, said the issue of child abuse and neglect was the first priority the League decided to support when it transitioned from a project-based to an issue-based focus in 2005.

"When a home becomes unsafe, the children of our community deserve a safe haven," she said of the decision to grant \$660,000 toward the creation of Isabel's House to shelter kids ages four to 12 whose families are experiencing crisis circumstances.

Erica Harris, director of the Light House Child Development Center, said its partnerships with the

faith community to use churches that are open during weekdays have helped it expand to a second location with plans in development for a third site. She said the families, who go through a rigorous screening process, are averaging a \$5,000 increase in household income and an \$8,000 decrease in household debt through the consistent availability of child care and the related family services.

"They know they are signing up for engagement in their child's future and their child's success," Harris said. "We want them to be advocates for their children."

Sign up for our monthly e-mail updates. Just send a request to bdierks@cfozarks.org or call us at (417) 864-6199.

Non-Profit Org.
U.S. Postage PAID
Springfield, MO
Permit #6880

Community Foundation of the Ozarks
425 E. Trafficway
Springfield, MO 65806

Telephone: (417) 864-6199 Fax: (417) 864-8344 www.cfozarks.org

OUR MISSION | The Community Foundation of the Ozarks is committed to working with donors, Agency Partners and regional affiliate foundations to strengthen our region through asset development, grantmaking, public leadership and collaboration.

**Forging a Strong Link
Between Donors
and Community Needs.**



Spring 2011 | Newsletter

Community Foundation
of the Ozarks



Coover Regional Grants Target Children's Needs Across Ozarks

Backpacks filled with food to tide children through what might otherwise be a hungry weekend.

Tiny sleepers and blankets handmade with love for babies the seamstresses may never meet.

Dental services and screenings for kids who have no other options to fight decay or pull a painful tooth.

These are some of the programs supported by \$105,000 in the Coover Regional Grantmaking Program's 2011 awards to 12 groups working to fight rural poverty across southern Missouri.

This year's grants created a total of 194 awards

List of 2011 Coover Grants page 8.

valued at \$2.6 million since this partnership between the CFO and Commerce Trust began in 2003.

The Louis L. and Julia Dorothy Coover Regional Grantmaking Program is the result of a trust established by Mrs. Coover, a longtime Commerce Bank employee, to honor her husband.

More than \$650,000 in requests were made for the 2011 grants, which were reviewed by a committee

Continues on page 8



Julia Dorothy Coover

The Grantmakers Challenge for Children



Lynn Tynes



Kevin Huffman



Erica Harris



All of the ECHO participants at the January event gathered to receive the framed photo created by Randy Bacon.

35 Partners Respond to "Red Flags" for Children Over 5-Year Effort

What began with a commitment of \$6.5 million from Ozarks grant funders to work on children's "red-flag" issues in 2005 grew to more than \$22 million by the time the Grantmakers Challenge for Children concluded in 2010.

The Community Foundation of the Ozarks honored this major collaborative effort among 35 partners with a recognition event this winter to mark the end of the five-year effort, which included the \$1 million ECHO project representing the largest single grant ever made by the CFO.

The Grantmakers Challenge began in response to the "red flags" related to children's issues cited in the 2004-05 Community Focus Reports for Springfield and Greene County. The January wrap-up event also served to kick off the 2011 Community Focus Report, which will be published this fall to provide an updated look at a variety of benchmarks for education, health, arts, recreation, safety, and social-services issues.

The event highlighted several projects to show the range of approaches taken by the Grantmakers Challenge partners over the past five years. ECHO

Continues on page 8

Grantmakers Challenge Partners

Thomas H. and Josephine Baird Memorial Fund
Robert and Margaret Carolla Fund
Care to Learn
Community Foundation of the Ozarks
The ECHO Project
CoxHealth Foundation
Darr Family Foundation
U.S. Department of Education
Female Leaders in Philanthropy
The Ferguson Family Fund
Gannett Foundation/Springfield News-Leader
Ed and Virginia Heer Family Foundation Fund
Isabel's House Crisis Nursery
Junior League of Springfield
Mayor's Commission for Children
Missouri Sports Hall of Fame/Price-Cutter Charity Championship
Musgrave Foundation
Ron and Cathy Neville
O'Reilly Family Foundation Fund
O'Reilly and Wooten Families
Ozarks Health Advocacy Foundation
Ronald McDonald House Charities
St. John's Foundation for Community Health
St. John's Clinic Force for Good
Foundation for Springfield Public Schools
City of Springfield CDBG Program
Central Trust & Investments
Bill and Ann Turner and The Turner Family Foundation
United Way of the Ozarks
The Charles L. and Dorothy Weaver Orthodontic Fund
Tal and Rosalie O'Reilly Wooten Family Foundation Fund
The Youth Empowerment Project
Anonymous donors and foundations

Cooper Challenge Raises \$927,000 For Rural Schools

Rural education endowments across southern Missouri are nearly \$1 million richer through the combined efforts of schools, affiliates and communities working to raise funds that were matched by the Harry Cooper Supply Company.

The CFO's Rural Schools Partnership this winter celebrated 26 communities that successfully completed the Harry Cooper Supply Company Campaign for the Ozarks Phase II to increase rural school endowments. They raised \$676,954, which generated \$250,000 in matching funds for a total of \$927,000 to support rural learning.

The districts, which had to complete the challenge by Dec. 31, are: Alton, Aurora, Ava, Bolivar, Bradleyville, Cassville, Dallas County, Dora, Eminence, Fair Grove, Fairview, Gainesville, Hermann, Hollister, Houston, Lockwood, Logan-Rogersville, Monett, Nixa, Reeds Spring, Seymour, Valle, Warsaw, Weaubleau, West Plains and Willard.

The schools plan to put distributions from their endowments toward a range of uses, including grants to teachers with innovative ideas, scholarships, and academic technology improvements. In Fair Grove and Reeds Spring, for instance, endowed scholarships are named in memoriam for teachers who left lasting imprints while Hermann's scholarship fund will support students taking dual-credit courses.

The community effort that went into the challenge campaigns also ran the gamut of creative fundraising ideas, many of which included special efforts to contact alumni. Aurora held a Christmas concert and received a portion of golf tournament proceeds. Nixa students created and sold Christmas cards. Cassville held a poker run, a potato bake and offered dress-down days. Monett students sold discount cards to area businesses.

John Richards, president of the West Plains R-7 School Foundation, summed up the sentiments expressed by many of the participants.

"We certainly appreciate the Cooper family for this match," he said. "The school has a lot of needs and we're going to use it to the best of our ability to help as many students as possible."



Message from the Chairman

The Community Foundation reached several new milestones in our 38-year history over the past few months.

Perhaps the most significant achievement is hitting the \$100 million mark in grants and distributions in mid-February. That is a remarkable testament to the efforts of all those who came before us, particularly the founders of our organization who envisioned the impact philanthropic giving could have on our region.

Reaching this \$100 million mark also affirms the remarkable generosity of donors across southern Missouri. These contributors range from major grant funders dedicated to our region's well-being to the planned gifts that will sustain us for the long term to all the supporters who participate in the fundraisers, bake sales, and auctions that bring in dollars for school and civic projects.

We also reached a record level for our total assets, which were \$172 million as of Dec. 31, 2010. Our investment rate of return was 12.3 percent for 2010. That performance is the result of a strong financial team led by our Investment Advisory Board, which sets the policy carried out by our staff and investment consultants.

Our scholarship program will offer \$760,000 in awards this year, which is up from about \$600,000 last year. Much of that growth is credited to significant bequests left to the Community Foundation and our affiliates by people who wanted to ensure that more

students have access to advanced education. You can read more about the scholarship program on page 4.

These milestones are the culmination of years of work and strategic focus in directing our organization's resources. They come at a time when we are developing a new strategic plan to guide the next three to five years of the CFO's growth. The CFO Board of Directors held a February retreat to set the framework for the next strategic plan, which will be implemented beginning in July. This effort is a cornerstone of our current Action Plan.

Here is an update of our other 2011 Action Plan items:

- The Investment Advisory Board expects to make a recommendation this spring on a "third tier" investment option that would offer less risk than the comingled fund, but a higher rate of return than the money-market option.
- The reinvigorated Grantmaker's Forum held its first meeting in the fall; the winter meeting was postponed due to the weather, but will be rescheduled this spring.
- A pilot project is nearly complete for The Rural Schools Leadership Academy, which will provide leadership skill development for rural high school students throughout the Ozarks.
- The Family and Community Funds and new Giving Circles Funds are providing accessible and flexible options for donors with specific ties or interests.



CFO's Chairman David Pointer, Gainesville

- The Legacy Society continues to grow with the Legacy Leadership Challenge providing an incentive to affiliates to promote planned gifts in their communities.

It's been a busy start to the new year at the CFO and we appreciate the ongoing support, ideas, participation and commitment that allow us to reach these milestones in creating stronger communities and schools across our region.



Doug Pitt accepts the 2010 Humanitarian Award from founder Jewell Thompson Schweitzer.

Doug Pitt Named 2010 Humanitarian

In keeping with founder Jewell Thompson Schweitzer's goal of honoring an individual each year who has committed service, time and resources to individuals in need, the 2010 Humanitarian exemplifies those qualities and more through his program to provide basic necessities to children.

More than 130 people celebrated the December announcement of Doug Pitt as 2010 Humanitarian for the "Care to Learn" program he developed to respond to health, hunger and hygiene needs some children experience. Since the program's inception in 2008, almost 37,000 individual needs have been addressed, with the goal of same-day service. After initially recognizing the need for these services, Pitt found financial resources and start-up support through Springfield businessman Jim D. Morris and the Jolie-Pitt Foundation.

"A community needs to take care of its own," Pitt said in accepting the award. "We should be very proud of the collaborative spirit that goes on every day in our community."

The Humanitarian honor includes a \$3,000 cash award, which he chose to divide evenly among the six "Care to Learn" chapters in Springfield, Bolivar, Ozark, Nixa, Republic and OTC.

The 2010 award marked the 21st year the Community Foundation recognized humanitarian contributions made by individuals in the Ozarks since Mrs. Schweitzer, an eight-year CFO Board member, established the fund.

Pitt was nominated for the award by friend and businessman Bobby Allison, Drury University President Todd Parnell, and SRC Holdings Corp. President Jack Stack. Parnell described Pitt, the co-owner of ServiceWorld Computer Center in Springfield, as someone with "the heart of a philanthropist" who also has the good business sense to run an effective non-profit program.

In addition for his work on Care to Learn, Pitt was cited for his service as co-chair of the

Homelessness Task Force in Springfield; his support for the Rotary Club of Springfield-Southeast; the James River Assembly of God; the Foundation for Springfield Public Schools; Relay for Life; Worldserve International; the Ozarks Honor Flight; and the Council of Churches of the Ozarks. He and his wife, Lisa, have three children, Landon, Sydney, and Reagan.



Doug Pitt had to put up with a few jokes at his expense during the 2010 Humanitarian luncheon, one of which elicited a big laugh from his mother, Jane Pitt.

CFO News in Brief



The Guaruma group from Honduras visits with Gov. Jay Nixon and First Lady Georganne Nixon.

Honduran Students Visit Jefferson City

Students from an after-school program in Honduras spent a week in Missouri last fall, learning in several areas including recycling, wildlife conservation, and environmental stewardship.

The Guaruma program's visit to Jefferson City was supported by the River Bluffs Audubon Society and the CFO with coordination from staff and volunteers at the Runge Nature Center.

The visit was inspired by a group of birding enthusiasts who saw the Guaruma program during a visit to Honduras and wanted to invite the students to Missouri. It was the first time the two students traveled outside of their home country. Adolfo Lopez and David Chavez made the trip with Guaruma's Executive Director Francisco Cabanas.

Planned Giving Video Available

A new CFO video offers a first-hand interview about how donors can approach planned giving and the personal impact it makes in leaving a legacy gift to support favorite charitable causes.

"A Conversation with Bill Putnam" features the Carthage native and former executive director of the Community Foundation of Southwest Missouri, Inc.

The 10-minute video, which could be shown at affiliate or agency partner board meetings or at presentations about planned giving, tells Putnam's story through an interview with former Springfield news anchor Christine Daues. He explains several ways planned giving can provide benefits during the donor's lifetime and describes his commitment to giving. The video is at: <http://vimeo.com/16221765>

CFO Websites Expand and Evolve

Several enhancements have been made to the CFO's websites to make it easier to access information and learn more about our full range of programs.

On the main site – cfozarks.org – a new tab on the homepage will take visitors directly to Donor Central to access their fund information. A new section called "Media and Publications" offers resources and links to CFO's newsworthy information. The Scholarships section now includes a number of applications that can be filed online using a pilot project for this year called ScholarSelect.

At ruralschoolspartnership.org, a video feature is now embedded on the home page and an area dedicated to the Ozarks Teacher Corps offers expanded information about that program.

The Youth Empowerment Project site – yepozarks.org – is fully online with a fun photo bucket, news about YEP activities and individual chapter pages.

The CFO's arts site – cfoartsinaction.org – has expanded beyond its use for the annual "10 Weeks Festival" to include more information about all of the arts-related programs.

You can also keep up with CFO activities on social media. On Facebook, search for "Community Foundation of the Ozarks," "Ozarks Teacher Corps," or "Bridget Dierks" for YEP news. Twitter users can follow us at twitter.com/cfozarks.

Greater Seymour Area Foundation YEP Student Graduates to Affiliate Board

The Youth Empowerment Project, with 34 regional chapters and a host of involved students and sponsors, is a young program. The Springfield YEP led the way to more regional chapters and began making community grants less than 10 years ago; most regional YEP chapters have not existed long enough to usher a high school freshman through four years and onto college.

One YEP graduate, however, has accomplished a first for the program. Sponsor Renne Wallace has been developing youth philanthropists for eight years and can now proudly declare Amber Cook her first four-year YEP student to become an affiliate community foundation member.

Amber joined the Greater Seymour Area Foundation this fall. GSAF is a very active affiliate of the CFO with significant, ongoing fundraising and grantmaking programs as well as community projects and assets totaling more than \$1.4 million.

"I hope I can bring new ideas, but also new energy," Amber said. "The board members have great ideas, and I'm always impressed with our community. I want to learn from them."

Amber, a senior at Missouri State University, is a social work major with plans to attend the University of Missouri to pursue a graduate degree. Currently, she is studying in Sweden for her final semester of undergraduate work and is working in the Swedish foster care system to learn how other foster systems function outside the

United States. After she completes her education, Amber plans to live in Seymour.

"I have always wanted to go back to Seymour because it's a unique city. I want to go back home, back to Seymour to stay," she said.

Amber's evolution from high school freshman YEP student to adult Community Foundation affiliate board member is worth celebrating because it is the core of the Youth Empowerment Project's purpose. The Seymour YEP, an exemplary program focused on creative fundraising and thoughtful grantmaking, has granted nearly \$9,000 to youth-oriented projects in Seymour since 2004.

"YEP gave me a basic knowledge of how grants work," Amber said. "It was a community-building experience for me."

She credits her community-minded attitude and degree choice to her experiences in Seymour and in YEP.

"The things I learned from YEP led me to my social work degree. It gave me a good background for social work," she said.

Her experiences gained from YEP provided her with both a career direction and a love for her community.

"I see a mentality that says if you want to be a success you should leave, but to me that seems unfair," she noted. "These are the people who made me who I am. To come back to that is important."

To learn more about YEP, visit www.yepozarks.org or contact Bridget Dierks at bdierks@cfozarks.org.



Amber Cook grew up east of Seymour on her parents' dairy, which abuts her grandparents' farm. Her mother, a physician's assistant, and her father, a lifelong farmer, instilled in Amber a sense of place that provided a foundation for her YEP involvement.

Affiliate Spotlight Douglas County Community Foundation Founding President Reflects on Service

As the founding president of the Douglas County Community Foundation, Janice Lorrain has had the perspective of seeing her community's strengths and challenges from both the inside and the outside.

As an insider, she's been able to see synergies between the public and philanthropic sectors through her job as Director of Development for the City of Ava. As a one-time outsider, she has an appreciation for the area that comes from someone who made a conscious decision to re-locate to Ava.

After serving as president since the Foundation was established in 2003, Lorrain decided to step down this year, while staying involved in the board's grant-making process under new President Nancy Hawk.

Lorrain moved to Douglas County from Texas some 30 years ago.

"As an outsider, I can see how precious this community is maybe even more than the people who've been here a long time," she said.

The Foundation got started when the city's first community Internet service was dissolved, leaving \$95,000 in sale proceeds for the community. Lorrain said she had heard a presentation by former CFO President Gary Funk and she convened a board to create an affiliate foundation for Douglas County.

Since then, the Foundation has grown to more than \$440,000 in assets and has made nearly \$140,000 in grants and distributions. Lorrain is proud of their efforts to create a cultural fund, the formation of one of the early YEP chapters, the walking trail near the city park, and receiving the Cooper Challenge grants. She wants to continue to champion efforts to build a new animal shelter.

"Janice has been a wonderful partner in our Foundation's effort to build rural philanthropy," Funk said. "She has diligently and thoughtfully worked with a great number of people to build the Douglas County Community Foundation."

Lorrain said her job doing development and grant writing for Ava connected to her Foundation role.

"It allows me to see where the needs are and where the resources are," she said. "I actually feel very privileged to work with these groups. I think people are extremely generous for a low-income area."

"I've been places where they say they've heard Ava is a progressive town," she added. "There are some real interesting people living out in these hills."



Founding president of the Douglas County Community Foundation, Janice Lorrain



New Funds Create More Awards for Advanced Education

Jim Jones doesn't think anyone in the Aurora area would have guessed that his Uncle Bill had a multi-million-dollar estate. Bill Jones kept largely to himself after retiring back to his family farm from St. Louis. After a tornado seriously damaged the home several years ago, he didn't even spend money on repairs.

Yet Bill Jones, who purchased U.S. Savings Bonds with each paycheck and never invested in the stock market, left half of his estate – about \$1.4 million – to the Aurora Area Community Foundation for a scholarship fund for Lawrence County students named for his mother, Laverta Arnhart Jones.

That was one of the bequests the CFO received last year that has grown the 2011 scholarship program to a record level of about \$760,000 available for southern Missouri students to pursue advanced education. That's an increase of more

than 20 percent from the \$600,000 in awards made last year. These scholarships represent a wide range of opportunities for students interested in



Bill Jones

The existing Straus Scholarship Fund also grew significantly through the bequest left by Henry J. Straus, who died in April 2010 at the age of 102. The eight new \$5,000 renewable Henry J. and Lucille J. Straus Scholarships will benefit students attending

public or private colleges and universities, medical or nursing schools, vocational-technical education, and awards designated for students from specific high schools by alumni giving back to their communities.

For more information about CFO scholarships, visit: www.cfozarks.org/scholarships, or contact Judith Billings, (417) 864-6199, or jbillings@cfozarks.org

private universities and the fund also will support additional applicants for the Ozarks Teacher Corps program.

The CFO also started a pilot project to accept online applications for certain scholarships this year through a software service called ScholarSelect. That program will be reviewed after this year's awards are made to decide whether to expand it to more applications next year.

The CFO's Scholarship Committee is chaired by Board member Mel Saunders, with committee members Hearld Ambler, Carol Pyles, Kathy Sheppard and Roslyn Thomas, and supported by scholarship coordinator Judith Billings.

CFO Calendar

MARCH 12-MAY 31

"10 Weeks Festival" of events benefitting Arts in Action. For details, visit: www.cfoartsinaction.org

MARCH 16

Executive Committee meeting, noon, CFO
"Red-Flag Response" Grant Celebration, 2 p.m., CFO

MARCH 18

APSI meeting, 10 a.m., CFO
Agency Partner seminar on "Fundraising" with Carol Silvey, 1-3 p.m., CFO

MARCH 19

"Celebrate a Legacy," Monett Area Community Foundation, 7 p.m., Community Building

MARCH 31

Student Conservation and Watch Watch grant deadline, 5 p.m.

APRIL 1

Fordland Conco Arts Grant photo exhibit, 6-10 p.m., Park Central Library for First Friday Art Walk

APRIL 7

Annual Affiliates Conference, 9:15 a.m.-3 p.m., CFO

APRIL 11

Coover Place-Based Grant deadline, 5 p.m.

APRIL 12

Springfield YEP grant presentations, 9 a.m.

APRIL 16

Executive Committee meeting, noon, CFO

APRIL 22

APSI meeting, 10 a.m., CFO

APRIL 26

Investment Advisory Board meeting, 9 a.m., CFO

MAY 5

Rural Schools Partnership Annual Meeting, 10 a.m.-3 p.m., Thomasville Community Center

MAY 10

Springfield YEP new member welcome, 11:30 a.m., Phelps Grove Park

MAY 18

Executive Committee meeting, noon;
CFO Board meeting, 3:30 p.m.

MAY 27

APSI Meeting, 10 a.m., CFO

JUNE 9

"Flights of Fancy" benefitting Arts in Action, 6-9 p.m., Springfield-Branson National Airport

JUNE 15

Executive Committee meeting, noon, CFO

JUNE 24

APSI meeting, 10 a.m., CFO

Weaver Orthodontic Fund Provides Life-Changing Opportunities

Established in 1981 by Mrs. Weaver to honor her husband, the Charles L. and Dorothy Weaver Orthodontic program offers funding to correct speech, nutritional, jaw function and facial disfiguration problems caused by improperly aligned teeth for individuals who cannot afford such treatment.

Since the program's inception, \$107,000 has been awarded to more than 70 recipients for treatment support. The treatment is made possible through the Weaver Orthodontic Fund, and also through services donated by Springfield and regional orthodontists.

The program's partner organizations – participating orthodontists, the Greater Springfield Dental Society, Springfield Public Schools and St. John's Clinical Services – select the recipients each spring. Qualification forms are sent annually to southwest Missouri dentists and school nurses who request consideration for patients who meet the Fund's physical and financial need requirements.

Angela Sicheluff and Stephen Sicheluff, daughter and son of Dorothy Sicheluff Weaver, described their mother's intent in a thank-you letter sent to the participating orthodontists.

"Our mother established the fund for two reasons, to provide services to children suffering from serious orthodontic conditions, and to honor the work performed by her husband, Charles L. Weaver. Her desire was to make a difference in the lives of children unable to access the care they need. We are sure that she would be thrilled by the numbers of children who have benefited from this fund."

The Weaver program's success would not be possible without services donated by the dental professionals. The participating orthodontists rotate on a yearly schedule to accommodate the selected recipients. They offer about \$2,500 of donated services for each patient they choose for the Weaver award, with the remainder of the cost provided through the Weaver fund. Area orthodontists and dentists who screen applicants work collaboratively at times to deliver the best treatment plan for patients when circumstances warrant.

One such partnership between Dr. Gary Buzbee, a dentist, and Dr. Frank A. Sharp, an orthodontist, will benefit 13-year-old Dylan Bauer. Dr. Sharp chose Dylan as a Weaver recipient through Dr. Buzbee,



Smiles don't come easily to Dylan Bauer, 13, whose perseverance despite serious dental problems endeared him to Dr. Frank Sharp and Dr. Gary Buzbee.

when Dylan's family first inquired about the program.

"The thing that struck me the most about Dylan was his great outlook and perseverance through life, despite his dental appearance, that he showed every time we met," Dr. Buzbee wrote.

Dr. Sharp confirmed Dr. Buzbee's assessment when he screened Dylan, who is missing 12 of 32 permanent teeth, had two impacted teeth and two malformed crowns that would likely need extraction. With Dr. Buzbee's offer to provide additional dental services to correct Dylan's dental needs at no cost to the family, the two professionals believe they can create a positive outcome for Dylan.

"Dylan's case is extremely difficult. He would have never qualified for the Weaver Grant without Dr. Buzbee's confirmation to help with the restorative part of Dylan's treatment after orthodontic movement," Dr. Sharp said. "This is going to be a tough case, but at the same time one of the most rewarding ones to finish for Dr. Buzbee, me and, more importantly, Dylan. What an inspiration he is. His optimistic attitude on life has never been affected by the fact that it is very difficult for him to eat, smile and live in an aesthetically minded society."

A majority of the orthodontists in each rotation choose additional children to receive services at no cost, sometimes as many as three, along with the Weaver recipient. Through the gracious choice made by Dorothy Sicheluff Weaver to honor her husband, many children and adults across the Ozarks have new opportunities to change not only their appearance, but the options available to them throughout their lifetimes.



Students Gain Real-Life Experience Building House

How often do you get to hear high-school students talk about how excited they are to get to school every day?

That's the refrain, though, from Willard students working on the Transition House for special-needs students, a \$265,000 project supported by federal stimulus funds, the Willard Children's Charitable Foundation, and a \$20,000 Louis L. and Julia Dorothy Coover Place-Based Grant from the CFO's Rural Schools Partnership and Commerce Trust.

It's the students themselves, under the careful eye of building trades teacher Steve Vaughn and professionals in plumbing, electrical and other trades, who are building the 3,000-square-foot house adjacent to the high-school campus. They expect to be done well in time for the start of school in August, when the house will become a living classroom for students with cognitive impairments and physical disabilities to learn life skills in a real-world setting.

"This is my home away from home," says senior Dillon Johnson. "You're taking students and giving them this hands-on work. You can't ask for much better."



Steve Vaughn

Director of Special Education Sandy Gold credits special-needs teacher Sharla Beuerlein for the initial vision of the house and then Vaughn for executing the vision, starting with drawing the plans last summer and now offering ideas and suggestions throughout the process.

"She is just the best and she will utilize the house to the best of their ability," Gold says of Beuerlein. "She has a natural ability to meet the kids' needs."



Dillon Johnson

The house will include two classrooms and a SMART board, but also will have a traditional kitchen, laundry room, bedroom, and

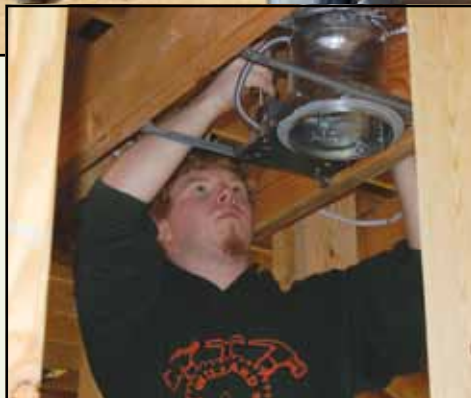
bathrooms where students will learn life skills such as cooking, cleaning, making beds and doing laundry. Gold says the program will serve about 35 students each semester, some of whom may get the training needed to move into jobs such as restaurant work.

After visiting a similar project in Kansas City, the Willard group anticipated building their house to ADA accessibility standards. But Gold says Vaughn urged them to shift gears and make the house a combination of accessible and traditional construction.

"The house in Kansas City was adapted for kids with disabilities and Steve reminded us that most people aren't going to live in houses constructed that way," Gold says. "Part of our job is to prepare them for all phases of life."

She also appreciates the efforts Vaughn has made to include special-needs students in the project. They, in turn, reciprocated by making dinner for the building-trades students and construction professionals for everyone to have an opportunity to socialize.

"We couldn't have had a better person for



The Transition House project has created camaraderie among the groups of students in each of the building-trades classes that work during different class periods. Student Robert Eubanks (left) works on installing a lighting fixture. Building an actual house (below) is a big step from the building trades classes' earlier projects like pavilions and baseball dugouts.

A total 29 juniors and seniors from three of Vaughn's classes are working on the house.



this project than Steve," she says. "I saw how he incorporated our kids with disabilities into the first wall that was raised. Steve made sure our kids were out there helping and that just meant a whole lot. He just thinks of everything."

Vaughn's commitment to the real-life experience comes full circle with his building trades students. Johnson, who has enlisted in the U.S. Army so he can work for the Army Corps of Engineers, says the experience is helping students decide whether they're suited for construction work – he notes several confronted their fear of heights during the roofing phase.

"You're pushing your limits – everybody's growing on this job site because you're doing things you've never done before," says Johnson, who hopes he'll

be able to return for the grand opening after he leaves for Fort Leonard Wood in June.

Jeremy Arnold, an electrician with Rick's Electric in Fair Grove, says it's been an interesting opportunity for him to mentor the students.

"They're doing really well and picking it up pretty good," Arnold says. "This shows them they don't necessarily have to go to college to have a career."

As Vaughn's group finishes up the construction, other classes will come over to the site. Agriculture students will do the landscaping and interior design students will work on the furnishings.

"I have been involved in the building of many projects, but none have had as much meaning to me as this house," Vaughn says. "These students have just responded tremendously."




Grant Report

The ongoing discretionary community grantmaking program of the CFO and its affiliate community foundations is funded with distributions from unrestricted and field-of-interest funds earmarked for specific communities or foundations. Grants listed below were made from Sept. 1, 2010 to Feb. 28, 2011.

Aurora Area Community Foundation

New Veteran's Memorial, Memorial construction	\$500
Tri-County Pregnancy Resource Center, Fatherhood program	\$500
Aurora Parks and Recreation, Walking trails	\$500
For the Kids, Foster child expenses	\$1,350
Barry-Lawrence Regional Library, Computer purchases	\$2,000

Benton County Community Foundation

Warsaw School District	\$2,500
Lincoln R-II Schools	\$2,500
Cole Camp R-I School District	\$2,500
Cole Camp Lutheran School	\$500
Warsaw Youth Empowerment Program	\$500
Warsaw Senior Center	\$1,000

Bolivar Area Community Foundation

Community Connections, To publish a Polk County community resource	\$1,000
Polk County Health Center, Prescription assistance	\$1,000
Polk County Christian Social Ministries, Share your Christmas program	\$1,000
Bolivar Area Salvation Army, Computers for food pantry program	\$1,000
Polk County House of Hope	\$1,000
Bolivar R-I School District, Reading is Fundamental program	\$500
Polk County Extension Council, Leadership Summit	\$500
Community Connections, Community art workshops	\$500
Community Connections, Air conditioner for history museum	\$500
Girl Scouts of the Missouri Heartland, Inc.	\$500
Bolivar Area Chamber of Commerce, Light the Park project	\$250

Bourbon Community Foundation

Bremer Hardware & Lumber Co, Trusses for building project	\$1,000
---	---------

Butler County Community Foundation

Costs associated with infant bereavement program	\$1,357
--	---------

Cassville Community Foundation

Cassville R-IV School District, Discovery Center program	\$2,000
P.A.C.E., Drug court treatment program	\$1,000
Boy Scout Troop 185, Programs and summer camp expenses	\$600
Barry-Lawrence Regional Library Cassville Branch, Children's programs	\$500
Cassville YMCA, Strong Kids program	\$500
Crowder College	\$500
Kornerstone, Inc.	\$250
Barry County Historical Society, Bayless-Sayler House restoration	\$250

Community Foundation of Southwest Missouri, Inc.

McCune-Brooks Healthcare Foundation, Inc.	\$2,000
Carthage Public Library	\$2,000
Benevolence Fund Distributions	\$675
Fir Road Christian Church, Upward Soccer Program, Carl Junction YEP Grant	\$250
Carl Junction R-I School District, Operation Fairy Godmother, Carl Junction YEP Grant	\$250
Carl Junction R-I School District, Coffee Club Literacy Workshop, Carl Junction YEP Grant	\$160
Carl Junction R-I School District, Tailspinners Reading Literacy Program, Carl Junction YEP Grant	\$250
Carl Junction R-I School District, Community Problem Solvers, Carl Junction YEP Grant	\$150

Crawford County Community Foundation

Bourbon Community Center, Matching grant for audio-visual project	\$500
---	-------

DACO Community Foundation

OACAC - Dade County Neighborhood Center	\$2,500
---	---------

Douglas County Community Foundation

Douglas County Health Department, Smoking cessation supplies	\$1,000
44th Judicial Circuit Drug Court	\$2,000
Ava High School, Food for the Friday Feast	\$1,000

El Dorado Springs Community Foundation

Church of Christ, Food pantry	\$1,200
El Dorado Springs Preserving Our Past Society, Puzzle project	\$675
El Dorado Springs Preserving Our Past Society, Pops Kitchen project	\$500

El Dorado Springs R-2 Schools, Elementary library	\$1,000
El Dorado Springs R-2 Schools, Special education class	\$400
El Dorado Springs R-2 Schools, Forensic science class	\$351
El Dorado Springs Senior Center, Meals on Wheels program	\$1,000
Reynolds Family Arts & Education Fund	\$1,500
Salvation Army - Olathe, Kan.	\$500
Project Hope	\$500
Habitat for Humanity	\$750
Kansas City University of Medicine and Biosciences	\$500
Catholic Relief Services	\$750
Grinnell College, Office of College and Alumni Relations	\$500

Eldon Community Foundation

Eldon Area Community Betterment Association, Christmas celebration	\$500
Sacred Heart Catholic Church, Tour of churches for ministerial alliance	\$1,000

Finley River Community Foundation

Ozark South Elementary, Blank books for journals, YEPO Grant	\$105
Ozark High School, Culinary class, butane burners, YEPO Grant	\$120
Finley River School, Quilting supplies, YEPO Grant	\$400
Ozark High School, Media class accessories, YEPO Grant	\$600
Talent show expenses, YEPO Grant	\$150
Ozark North Elementary School, Soccer trainers and scooters	\$789
Ozark South Elementary, Hearing assessment tool	\$705
Ozark High School, CPR training tools and equipment	\$702
Least of These, Food and hygiene products	\$1,000
Women In Need, Funds for women in financial crisis	\$781
Children's Smile Center, Custom crowns for teens	\$2,000
Christian County Family Crisis Center, Funding for propane	\$2,500
Ozark R-VI Schools, Backpack program	\$350

Hermann Area Community Foundation

Expenses paid to support cancer patients in Hermann area	\$19,471
--	----------

Community Foundation of the Lake

Hope House of Miller County, Inc.	\$1,453
Lake Area Helping Hands, Inc.	\$1,453
Marine Corps League #1137	\$200

Lockwood Community Foundation

City of Lockwood, Swimming pool repair	\$5,000
--	---------

Marshfield Area Community Foundation

Hubble Elementary School, Pod 2 Kindergarten guided reading sets	\$1,000
Web-Co Custom Industries, Inc., Recycle trailer	\$250
Marshfield R-1 School District, Jr. High tables	\$500
Imagination Station of Marshfield, Heating and cooling system	\$500
Webster County Helping Hands, Christmas program	\$1,000
Marshfield Performing Arts Society, Children's play	\$500
Marshfield R-1 School District, SOS Closet	\$43
Marshfield Cherry Blossom Festival Fund, Marketing materials	\$500
Jordan Valley Community Health Center, to support patient in need	\$231

Monett Area Community Foundation

Ozarks Regional YMCA, Monett YMCA branch	\$5,000
--	---------

Nixa Community Foundation

Women In Need, for women in financial crisis	\$966
Champion Athletes of the Ozarks, Christian County programs	\$1,000
Heart 4 Women, for the Purity, Passion, Pearls program	\$1,000
Nixa Junior High School, MO Truman Reading program	\$1,009
James River Basin Partnership, Watershed festivals	\$1,000
Nixa Parks and Recreation, Mannequins	\$865
High Pointe Elementary, Literacy Library, K-4	\$1,800
Nixa Schools, Care Team suicide prevention	\$1,000
Nixa Junior High School, Telescope and 3 binoculars	\$899
The Child Advocacy Center, Interviews for six Christian County children	\$2,700
Thomas Elementary School, Smart Board system	\$3,047
Shapes Mentoring, Connors Assessment program	\$2,030
Children's Smile Center, Dental services for Christian County children	\$1,500
Developmental Center of the Ozarks, Protocols and tools for First Steps therapy	\$1,200
Least of These, Gas generator for pantry	\$6,750
Nixa Amateur Radio Club, Additional receiver site	\$1,850
Boy Scout Troop 200, tents	\$3,850
Nixa Fire Protection District, Smart Board system	\$2,973
Nixa Parks and Recreation, Fly Fishing program	\$1,500
Nixa Early Childhood Center, Integrated listening program	\$1,920
Espy Elementary School, Literacy Library, K-4	\$1,800
High Pointe Elementary, Six webcams and extension cables	\$366

Mathews Elementary School, Big Book easels and whiteboards	\$1,534
Thomas Elementary School, Two listening centers	\$430
Bricks & Mortar Fund	\$3,993

Ozark County Community Foundation

Gainesville R-5 School District	\$300
---------------------------------	-------

Greater Seymour Area Foundation

Dollywood Foundation	\$919
Ozarks Family YMCA, Basketball goal for indoor pool, Seymour YEP Grant	\$500
Seymour R-2 School District, Stu Co recycling project, Seymour YEP Grant	\$350
Newborns in Need, Inc., SW Mo. Chapter	\$810
Angel-Baby Cat Rescue	\$600
Seymour R-2 School District, Accelerated Reader program	\$1,500
Seymour Community Library Fund	\$601
Seymour Head Start	\$851
Seymour Police Department	\$745
Seymour Senior Citizens Center	\$801
YMCA Seymour	\$290
Webster County Hope Center	\$1,000
Ozarks Family YMCA, Seymour branch	\$100

Ste. Genevieve County Community Foundation

Ste. Genevieve Art Guild, 2010 Promenade Des Arts	\$8,036
City of Ste. Genevieve, Public restroom facilities on main street for Promenade Des Arts	\$14,466
The Running Jenny Fund, In honor of Gary Funk's service at CFO	\$2,000
Ste. Genevieve Lions Club, 2010 Rural Heritage Days project	\$2,100
Ste. Genevieve Downtown Renewal Project, 2010 Plein Air Project	\$1,500

Stockton Community Foundation

Stockton Angel House	\$1,600
Korth Senior Center	\$400
Stockton High School, Communication Department	\$488
Benevolence Fund Distributions	\$200
Stockton R-I Public Schools, tree planting at school	\$3,000

Table Rock Lake Community Foundation

Barry-Lawrence Regional Library Cassville Branch, Two new computers at Shell Knob branch	\$2,500
Boys & Girls Club of the Ozarks, After-School program	\$2,000
Christian Associates, North Stone County response to families in crisis	\$6,000
Chances of Stone County, Developmental disabilities public awareness efforts	\$1,000
Galena City Hall, Playground equipment	\$1,500
Humane Society of the Branson Tri-Lakes Area, Chain link dividers at large dog facility	\$3,500
Kimberling Area Library Association, In support of annual book purchases	\$2,500
Kornerstone, Inc., Support for adult education building	\$6,000
Lives Under Construction Ranch, Lawn equipment and tools for community assistance program	\$4,000
Stone County Council on Aging, Meals on Wheels program	\$1,400

Taney County Community Foundation

Missouri State University, Rockaway Comprehensive Plan	\$7,500
City of Rockaway Beach, Advancement of the economic development department	\$1,883

Truman Lake Community Foundation

Clinton High School, Technical Students Association for robotics kids	\$1,000
Living Waters Ranch, Christmas from the Heart and Promapalooza	\$700
Golden Valley Daycare, Awning for front door	\$680
Allen Street Baptist Church, Neighbors Helping Teachers warehouse	\$500
Henry County Library, Matching funds for a computer	\$6,000
Clinton Tourism Association, Brochure racks	\$760
Clinton Friends of the Parks, Soccer field lights	\$1,000
Henry County Health Department, X-Ray machine	\$3,000
Clinton Christian Academy, Clinton YEP Grant	\$289
Clinton Christian Academy, Clinton YEP Grant	\$200
Henry Elementary School, Clinton YEP Grant	\$80
Henry Elementary School, Clinton YEP Grant	\$100
Clinton School District #124, Clinton YEP Grant	\$307

Community Foundation of West Plains, Inc.

Samaritan Outreach Center	\$800
Charitas House	\$800

Willard Children's Charitable Foundation

Willard R-II School District	\$750
Willard R-II School District, Partners in Strength activity	\$300

Willow Springs Community Foundation

Willow Springs CF, Ferguson Building expenses	\$8,200
---	---------

Lovely Ladies Leave First Giving Circle "Heartprints"

The Lovely Ladies Legacy Fund, one of the first Giving Circles created under this year's new fund option, made its first round of grants to eight groups in the region served by the Community Foundation of Southwest Missouri, Inc.

The Lovely Ladies awarded \$2,400 in grants to a range of causes, including: the Area Agency on Aging; Joplin Trails Coalition; Wildcat Glades Audubon Center; LiveSmart; and weekend backpack programs at McKinley and Emerson elementary schools in Joplin and Columbian and Fairview elementary schools in Carthage.

"Support from area agencies, such as The Community Foundation of Southwest Missouri, is making a huge difference in the lives of our students who typically go without," Emerson Elementary Principal Nila Vance said. "We are so fortunate to have such a giving community."

The Lovely Ladies Legacy Fund Giving Circle was established by women in the Joplin-Carthage area

to raise awareness about charitable giving and women's generosity through friendship and philanthropy. The group's first event took place in November with a "Ladies Night" that featured entertainment, hors d'oeuvres and desserts, a live auction, and a portrait setting at the Historic Ramsey Building in downtown Joplin.

"We wanted to support projects like these backpack programs because we are heartbroken to know that the only way some children get to eat is through school breakfast and lunch programs," said Michelle Ducre, executive director of the Community Foundation of Southwest Missouri, Inc.

The new Giving Circles funds are designed for groups of people who share common goals or interests to offer support through charitable giving. For more information about Giving Circles, contact Winter Skelton, Development Operations Officer at (417) 864-6199.



Nila Vance, principal at Emerson Elementary School in Joplin, accepts a \$300 check for the backpack program from Michelle Ducre, executive director of the Community Foundation of Southwest Missouri, Inc.



This photo by 8th grader Ryan Wester will be part of Fordland's exhibit at the Park Central Square Library in Springfield opening for First Friday on April 1.



Clinton received a Conco grant for a "CHS" marker at the new high school.

Rural Schools Receive Arts and Wellness Grants



RURAL SCHOOLS
PARTNERSHIP

The Rural Schools Partnership made two rounds of grant awards in fall 2010 for student-led projects focused on arts and wellness issues.

The Conco Community Arts Grant Program, supported by Conco Companies, made five grants totaling \$6,932 for student-led art projects at five schools. The grants were awarded to projects that use various forms of artistic expression to connect schools and communities.

- ✔ Ozark East Elementary School: \$1,500 for the school's 2010-11 cultural focus on Australia and New Zealand.
- ✔ Fordland R-III Photography Club: \$1,000 for equipment and supplies to expand the elementary and middle-school students' community exhibits.
- ✔ Norwood High School Youth Empowerment Project: \$1,500 to create murals in the school and do a community service project at the Wright County Children's Home.
- ✔ Richards R-V School in West Plains: \$1,500 to support the band of sixth- through eighth-grade students with instruments, music, supplies and clothing.
- ✔ Clinton High School: \$1,432 for a project to add "CHS" in school colors using painted rocks along the high-school drive.

The Student Wellness Grants of \$8,600 went to seven schools for projects to promote healthy choices in nutrition and active lifestyles. These grants are made possible by the Ed and Virginia Heer Family Foundation Fund.

- ✔ Fair Grove High School Youth Empowerment Project: \$1,300 for informational markers at a new walking track around school property.
- ✔ Purdy High School Spanish Club Youth Empowerment Project: \$900 to expand its research on food sustainability.
- ✔ Gainesville Schools' Youth Empowerment Project: \$1,500 for the YEP group to assume responsibility for the school's weekend backpack program.
- ✔ Carl Junction High School Youth Empowerment Project: \$1,500 to begin a weekend backpack program.
- ✔ Hermann Elementary School: \$1,500 for an "Art from the Heart" project combining nutrition education with printmaking skills.
- ✔ Valle Catholic School in Ste. Genevieve: \$625 to purchase pedometers for students participating in a morning walking program.
- ✔ Cuba All Aboard Learning Center: \$1,275 to support the annual "Turkey Trot Fun Run" fundraiser.

Affiliates Promote Planned Gifts In Legacy Challenge

CFO affiliates are participating in the Legacy Leadership Challenge to promote planned giving among their own board members as well as within their communities as a whole.

The CFO is offering a total of \$5,000 in unrestricted grant funds to the affiliates with the highest percentage of board participation and the highest number of new non-board Legacy Society members by June 30, 2011.

Affiliates can participate at any time through June 30. The goal is to encourage Affiliate board members to lead by example in promoting planned giving, which also is a goal of Chairman David Pointer for the CFO Board of Directors.

Questions about the Legacy Leadership Challenge can be directed to Winter Skelton, Development Operations Officer, at (417) 864-6199.